

10 Warning Signs of APDS

Primary Immunodeficiencies (PIs) like activated PI3k delta syndrome (APDS), are diseases where the immune system doesn't function properly. This means that people with APDS may experience a wide variety of signs and symptoms, making it challenging to recognize. The most common signs and symptoms are listed below. If you or someone you know is affected by two or more of the following Warning Signs, speak to a healthcare provider about the possibility of APDS.

1

Two or more of the following in one year:

- Sinus Infections -or-
- Pneumonias -or-
- Ear Infections



2

Persistent cough, uncontrolled or difficult to control asthma or scarring of lungs for no clear reason (known as bronchiectasis)



3

Persistent lymph node swelling



4

Frequent and severe diarrhea lasting more than four weeks



5

Enlarged liver and/or spleen



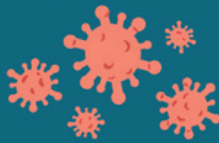
6

Diagnosed autoimmune or autoinflammatory conditions (especially if early age of onset or multiple autoimmune conditions)



7

Recurrent and difficult to treat herpes viral infections (especially if CMV/EBV are chronic)



8

Developmental delays including cognitive delays and/or growth delays (i.e. short stature)



9

Lymphoma or family history of lymphoma (a group of cancers affecting the lymph nodes)



10



Family history of another primary immunodeficiency disease or CVID

These warning signs were developed by the Jeffrey Modell Foundation (JMF) and Pharming and are being provided for informational purposes only. We believe this information to be reliable and accurate, but the information cannot be construed as medical advice, diagnosis, or treatment. Consultation with PI experts or your healthcare provider is strongly suggested.



Scan the QR code for more information from the JMF about PI.

Presented as a public service by:



Pharming



Jeffrey Modell Foundation

Curing PI. Worldwide.